

RNAV1 (DME/DME or GNSS)
STANDARD ARRIVAL CHART -
INSTRUMENT (STAR) - ICAO

DISTANCES IN NAUTICAL MILES
TRACKS ARE MAGNETIC
ALTITUDES AND ELEVATIONS ARE IN FEET

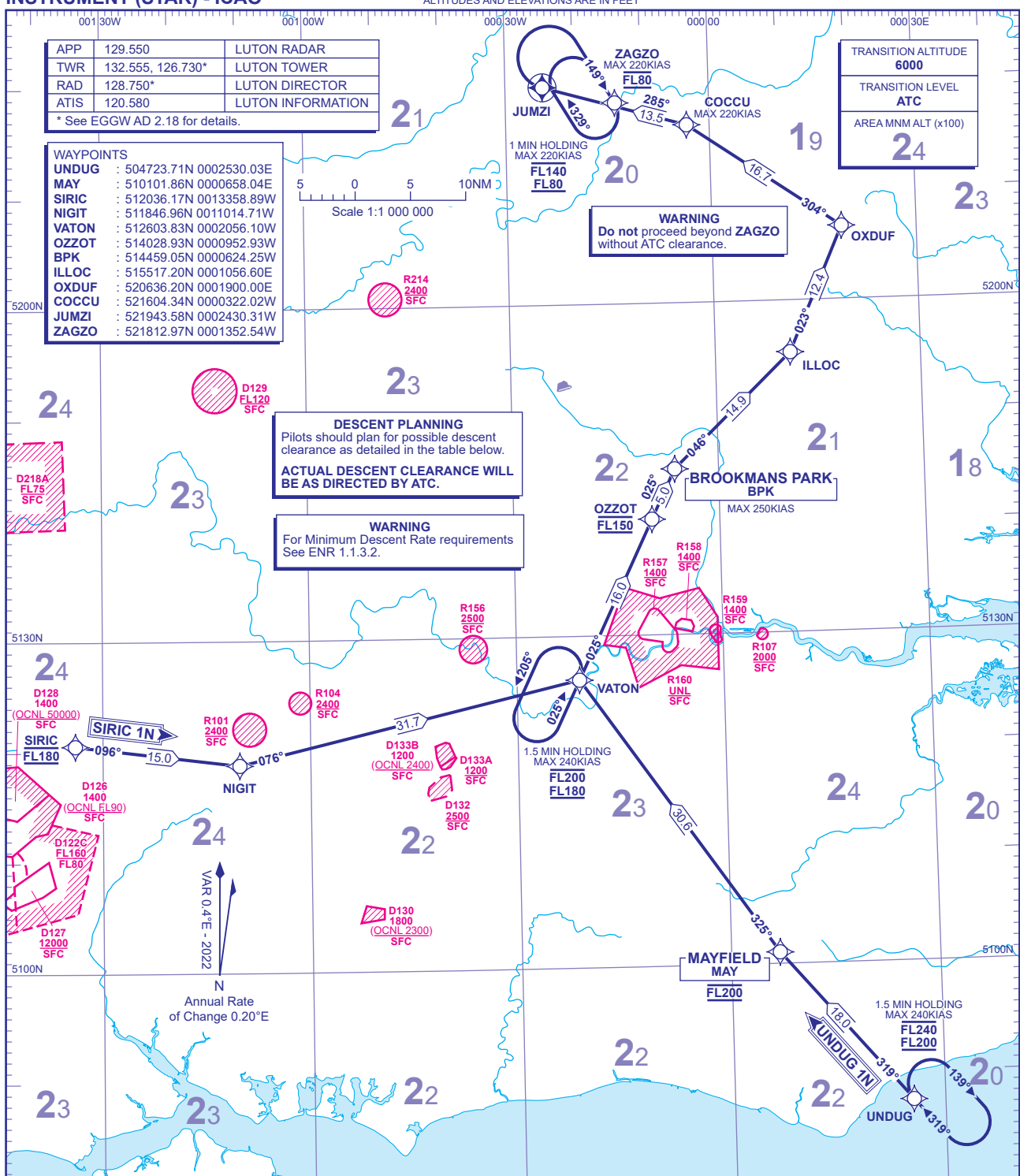
LONDON LUTON
UNDUG 1N SIRIC 1N

APP	129.550	LUTON RADAR
TWR	132.555, 126.730*	LUTON TOWER
RAD	128.750*	LUTON DIRECTOR
ATIS	120.580	LUTON INFORMATION

* See EGGW AD 2.18 for details.

WAYPOINTS	
UNDUG	: 504723.71N 0002530.03E
MAY	: 510101.86N 0000658.04E
SIRIC	: 512036.17N 0013358.89W
NIGIT	: 511846.96N 0011014.71W
VATON	: 512603.83N 0002056.10W
OZZOT	: 514028.93N 0000952.93W
BPK	: 514459.05N 0000624.25W
ILLOC	: 515517.20N 0001056.60E
OXDUF	: 520636.20N 0001900.00E
COCCU	: 521604.34N 0000322.02W
JUMZI	: 521943.58N 0002430.31W
ZAGZO	: 521812.97N 0001352.54W

TRANSITION ALTITUDE	6000
TRANSITION LEVEL	ATC
AREA MNM ALT (x100)	24



ROUTE DESIGNATOR	VIA	ROUTE	LEVELS
UNDUG 1N	(U)M733	UNDUG - MAY - VATON - OZZOT - BPK - ILLOC - OXDUF - COCCU - JUMZI, then turn right to intercept course 149° to ZAGZO.	MAY FL200 OZZOT FL150 ZAGZO FL80
SIRIC 1N	P2	SIRIC - NIGIT - VATON - OZZOT - BPK - ILLOC - OXDUF - COCCU - JUMZI, then turn right to intercept course 149° to ZAGZO.	SIRIC FL180 OZZOT FL150 ZAGZO FL80

GENERAL INFORMATION

- Standard Routes may be varied at the discretion of ATC.
- Adhere to maximum speed limits where specified by waypoint constraints.
- Maximum 250KIAS below FL100 unless authorised by ATC.
- Aircraft may be instructed "Direct to" (waypoint) following radar vectoring.
- En-route holding may be required at **UNDUG** or **VATON** as directed by ATC.